

**Installation instructions for Ross Sport tubular manifold heat shield and cam sensor heat shield:
Mitsubishi Evo X**

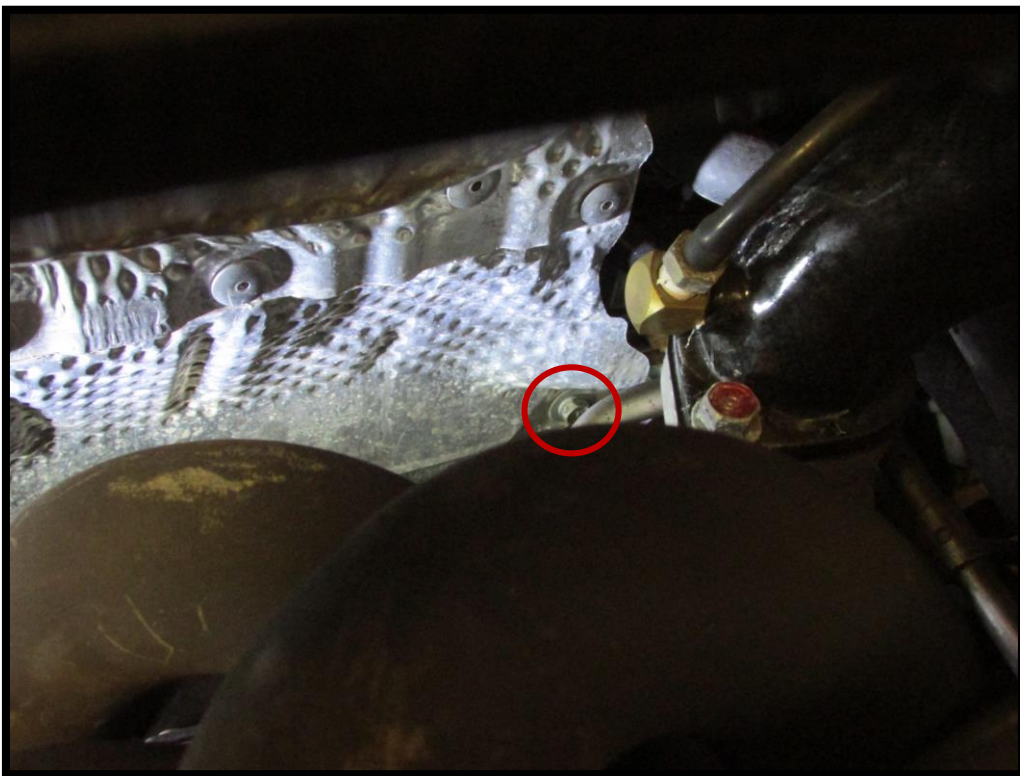
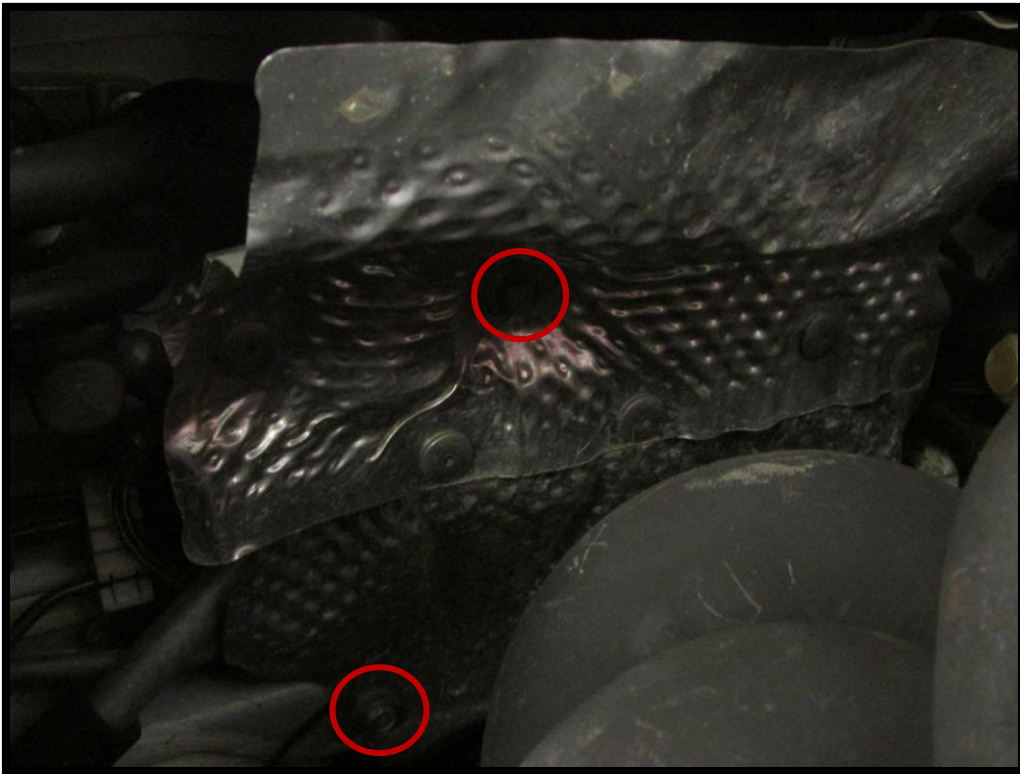
To complete this installation you will require the following:



- Racket with 14mm Socket.
- Racket with 10mm Socket.
- Racket with 6mm Allen Bolt head.
 - 14mm Spanner.
 - Drill, with 6mm drill bit.
 - Torch (Optional, but useful).
- M10 x 20mm Bolt (Not pictured, supplied).
- M8 x 20mm Bolt (Not pictured, supplied).

Installation of the Ross Sport tubular manifold heat shield for Evo X:

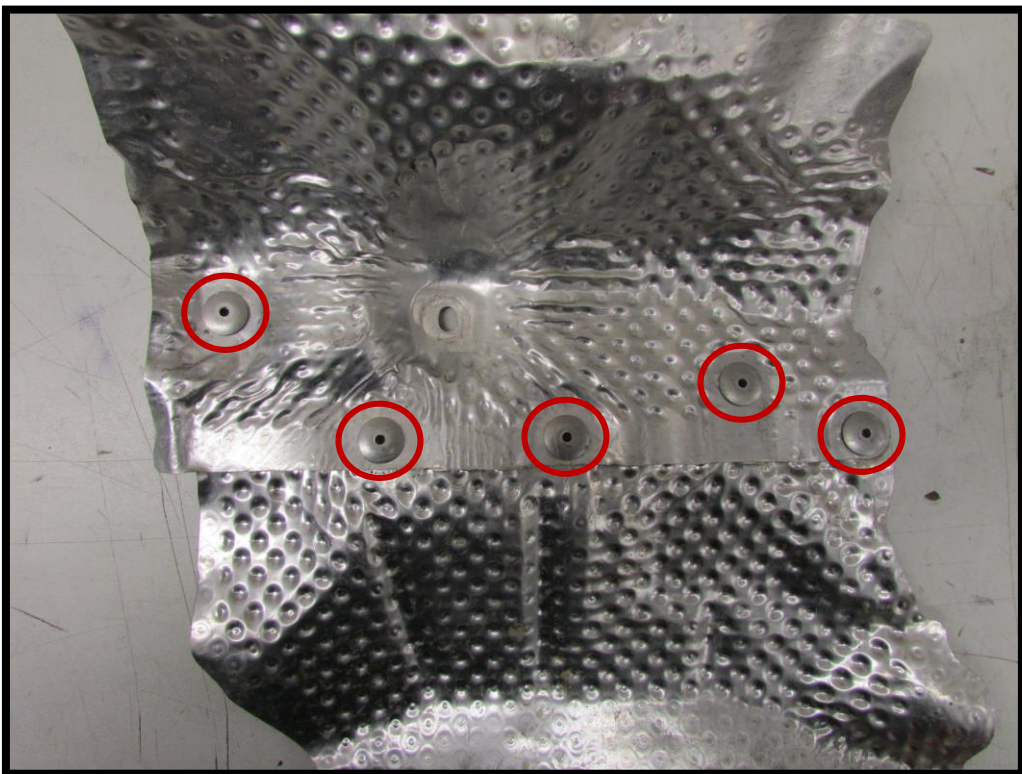
1. Firstly, using the ratchet with a 10mm socket, remove the three original bolts that hold the original heat shield in place (circled).

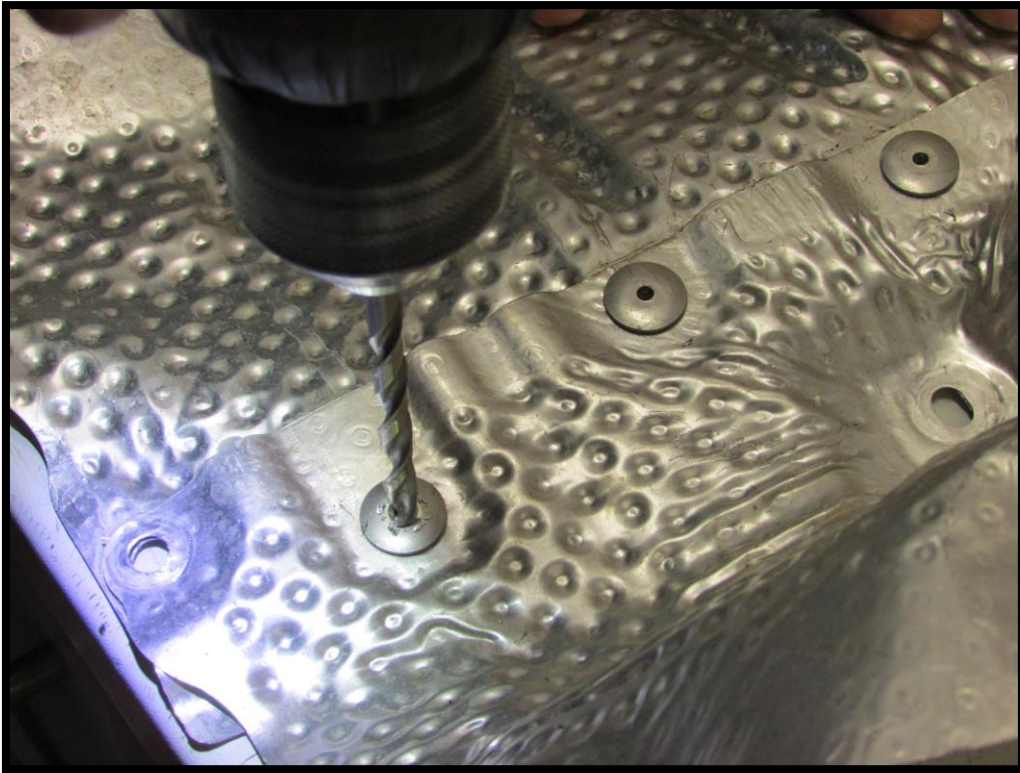


2. Remove the original heat shield, retaining the original bolts (Two of these bolts are used later on).

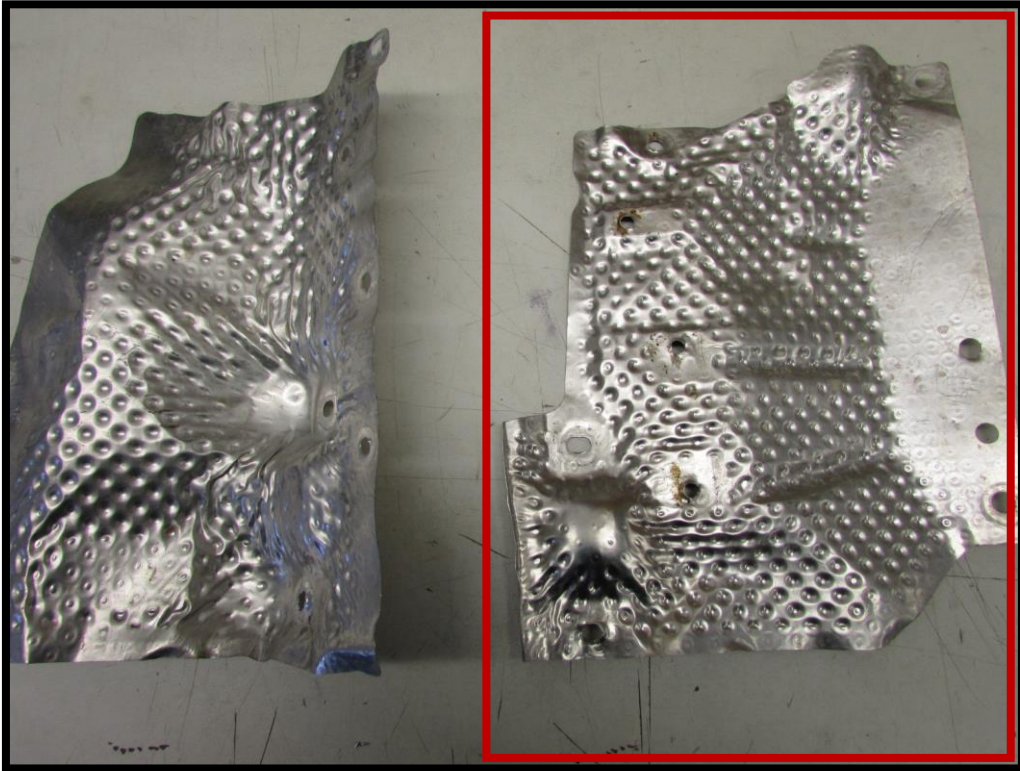


3. Using the drill (with a 6mm drill bit), drill out the five rivets circled in the pictures below.





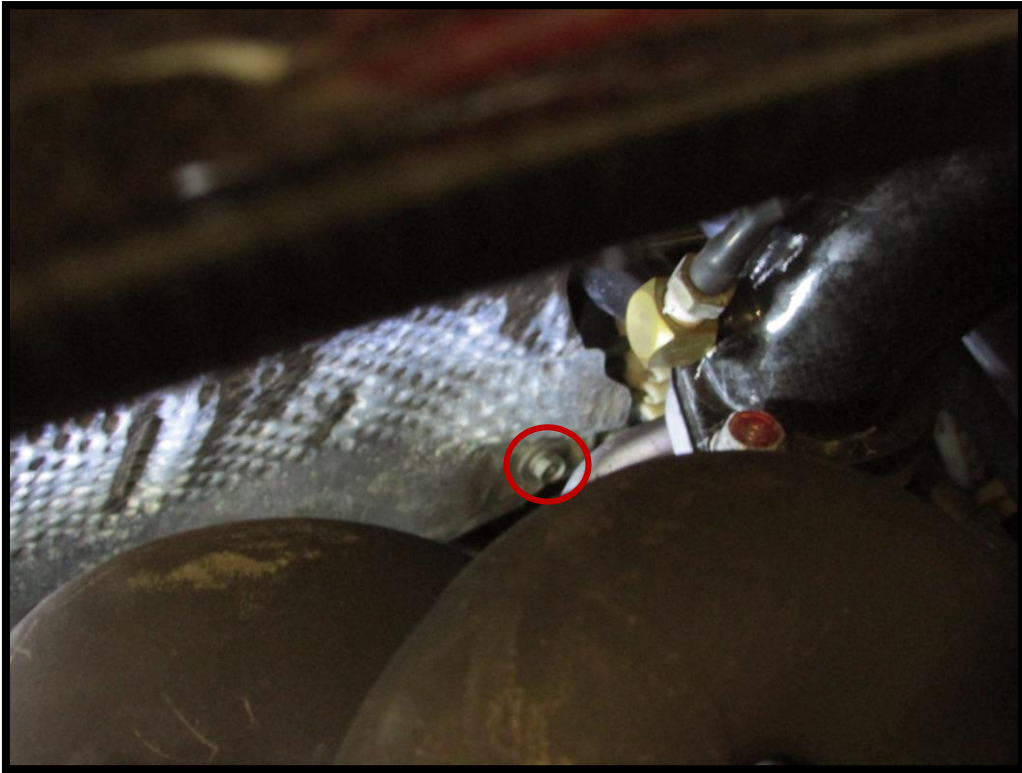
4. Separate the two sections, retaining the section highlighted (The other section can be discarded).





5. Bolt this section of the original heat shield back into the car using only the bottom two bolts (Circled). **Note:** Leave the top bolt out at this stage.



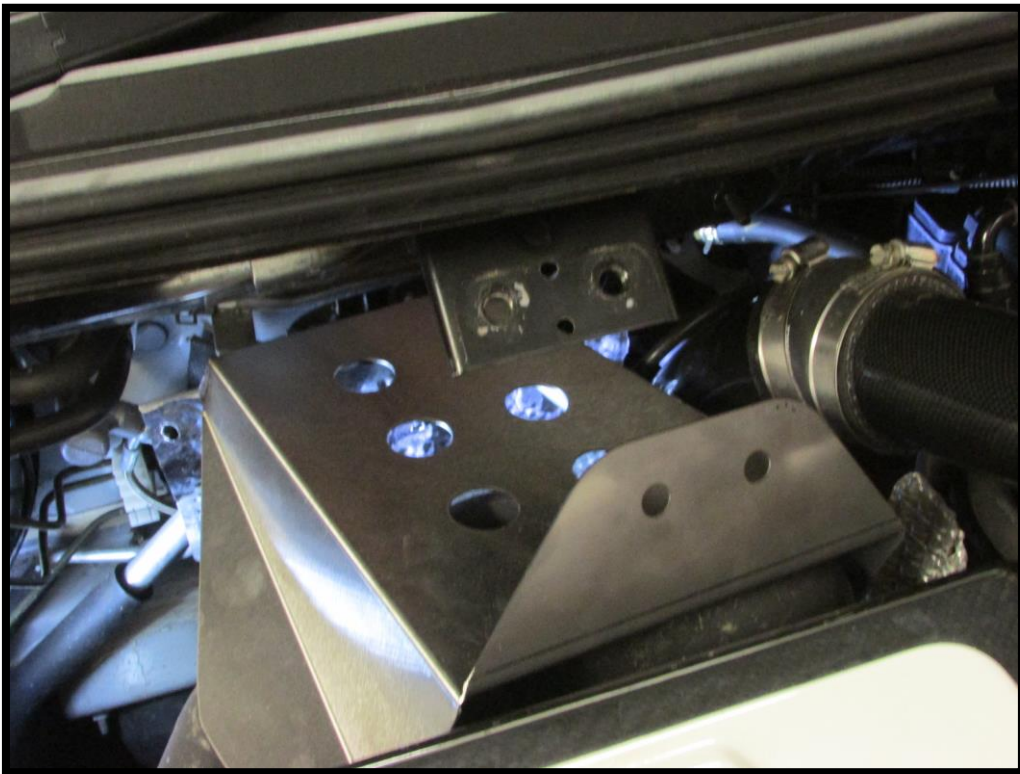


6. Remove the strut brace using the Racket with 14mm socket and the 14mm spanner.



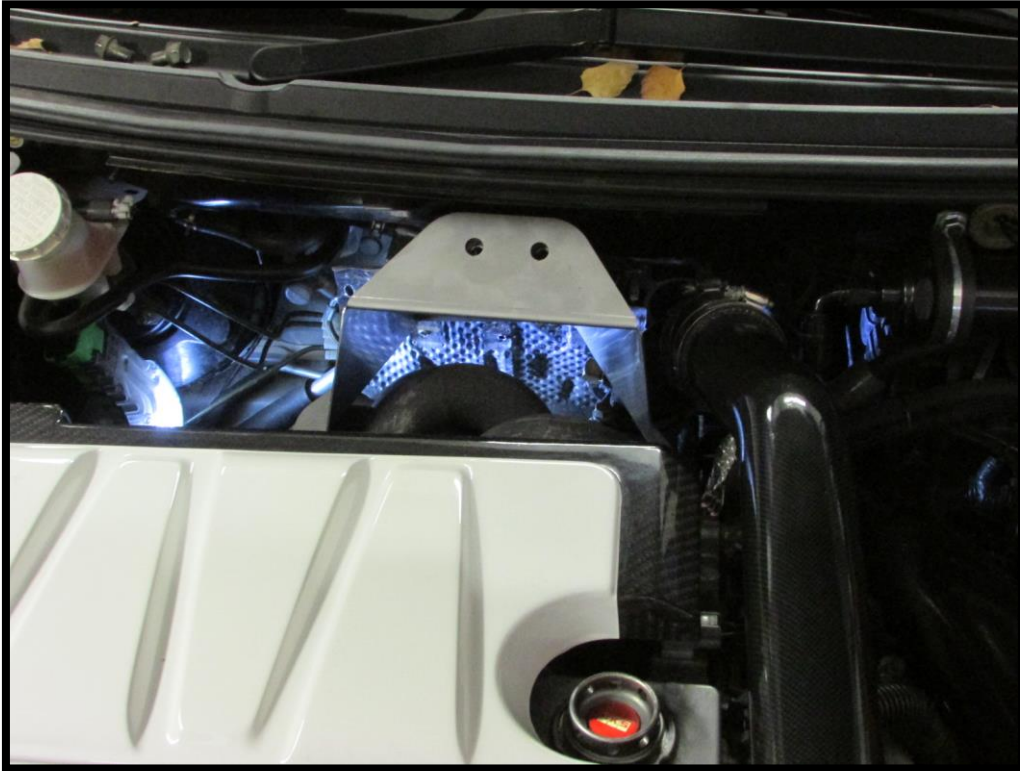


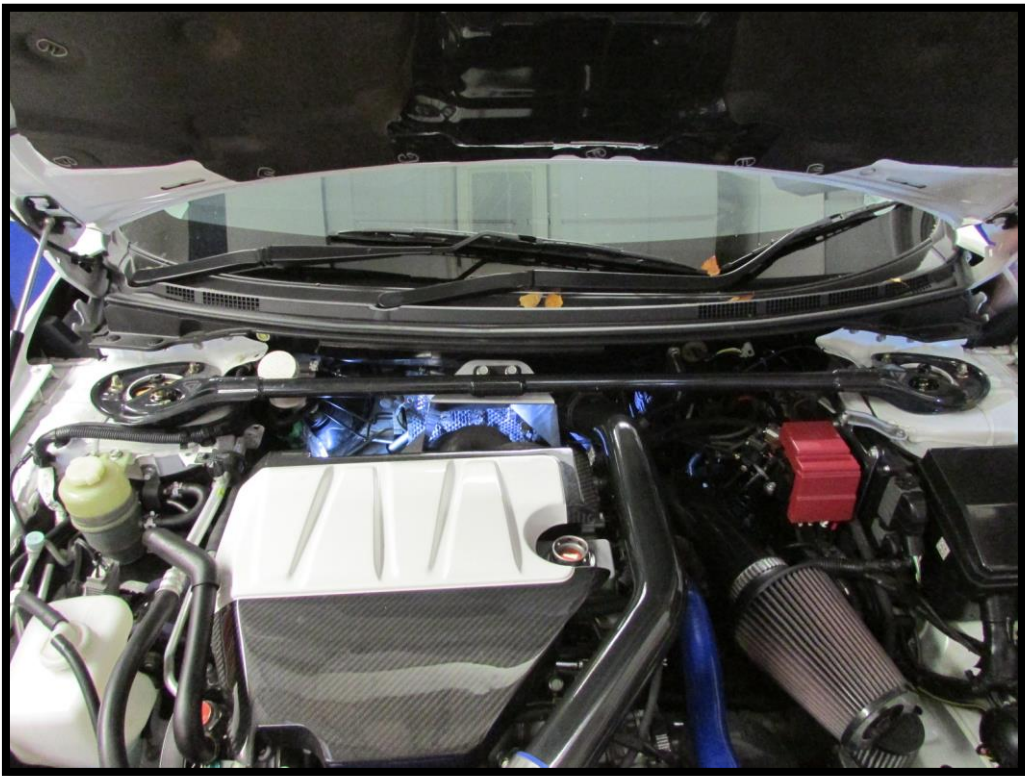
7. Using the Racket with 10mm Socket, bolt the new heat shield to the car with the supplied M10 x 20 Bolt, into the threaded hole for the third original bolt (See pictures below).





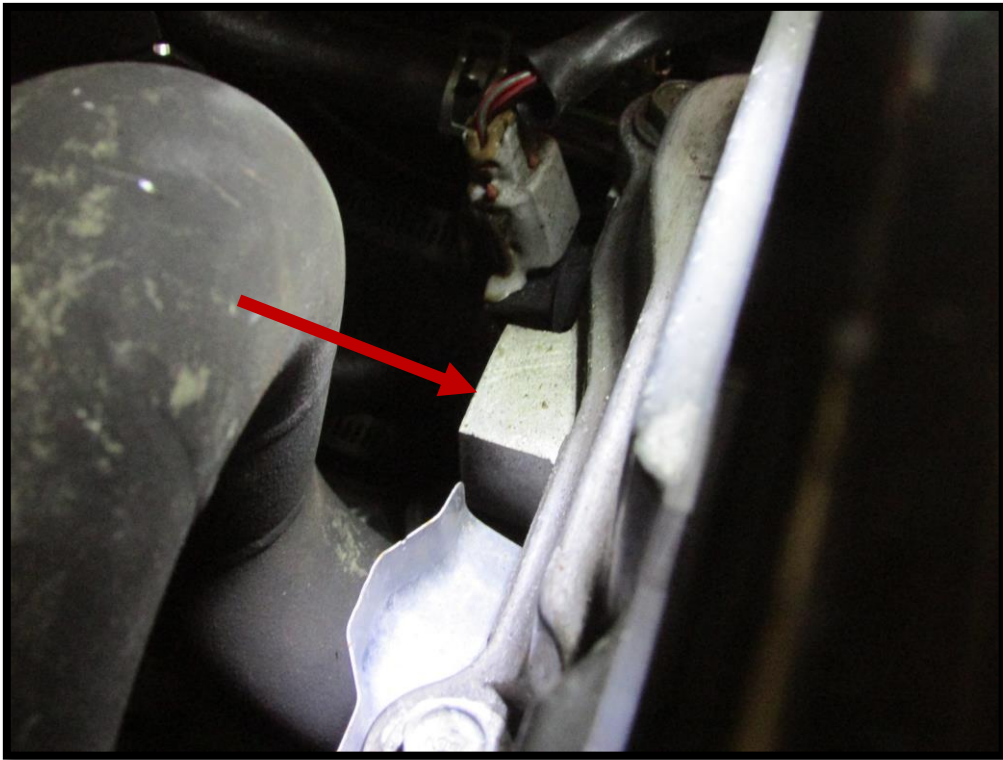
8. Line the two holes on the strut brace mount with the holes on the top flange on the new heat shield, and re-attach the strut brace.





Installation of Ross Sport Cam Sensor Heat Shield for Evo X:

1. Remove original heat shield (If applicable).
2. Locate threaded hole for new heat shield to bolt to (See photographs below).



3. Using a Racket with 6mm Allen Bolt Head and the M8 x 20mm Bolt supplied, bolt the heat shield to the car.



